

# SECRET TROVE MAP

## STATION 1

### TROUBLE BUBBLE

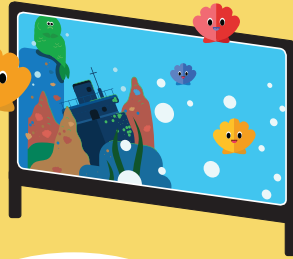
A huge wave has trapped the reef creatures in bubbles. Match the same creatures to help them escape!



## STATION 2

### MESSY OCTTY

The shell collection of Octty, the great octopus, is in a mess. Help sort them out!



## STATION 3

### MR. POSTMAN

Help spread the message of keeping our oceans clean to islanders!



## STATION 4

### SURFER'S BAY ADVENTURES

Save baby clams from the rolling waves. Watch out for obstacles!



### PHOTO TIME WITH JENNY AND JERRY

Don't forget to take a photo and bring a part of the ocean back with you!

